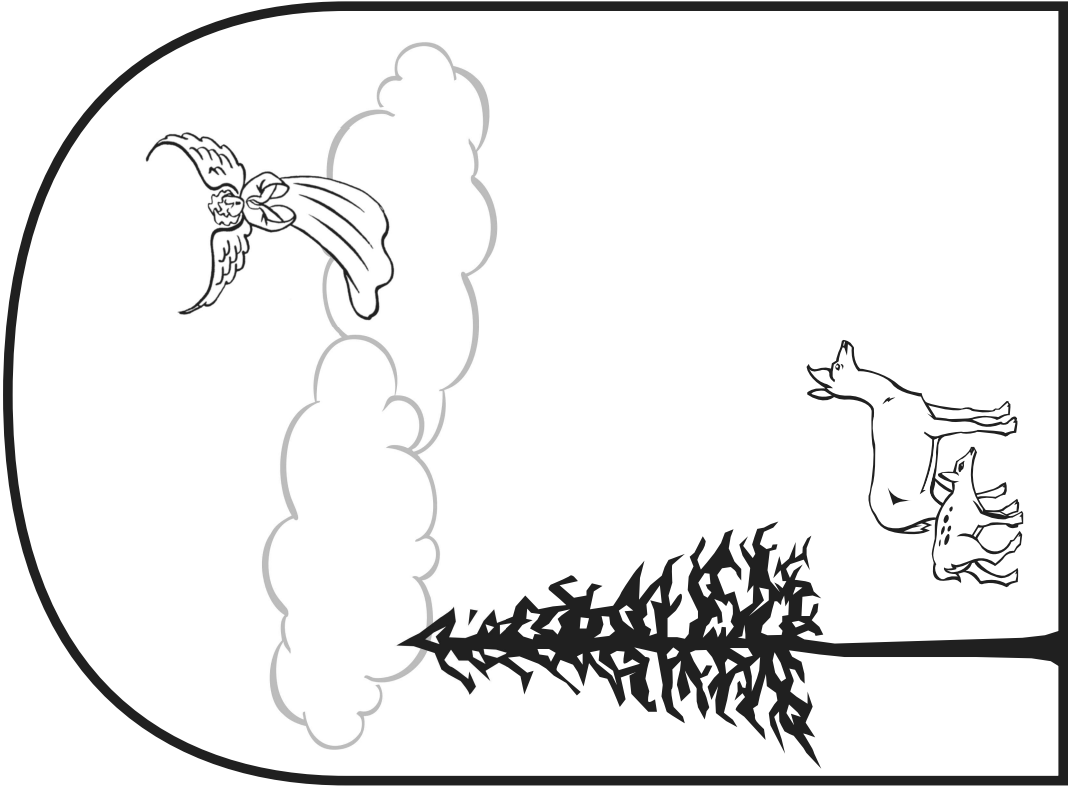


Many ancient churches were decorated in a similar way. There were drawings of plants and animals by the floor. The sky and angels were in the middle. Jesus was at the very top.

**Finish drawing the Earth and the heavens on this wall.**

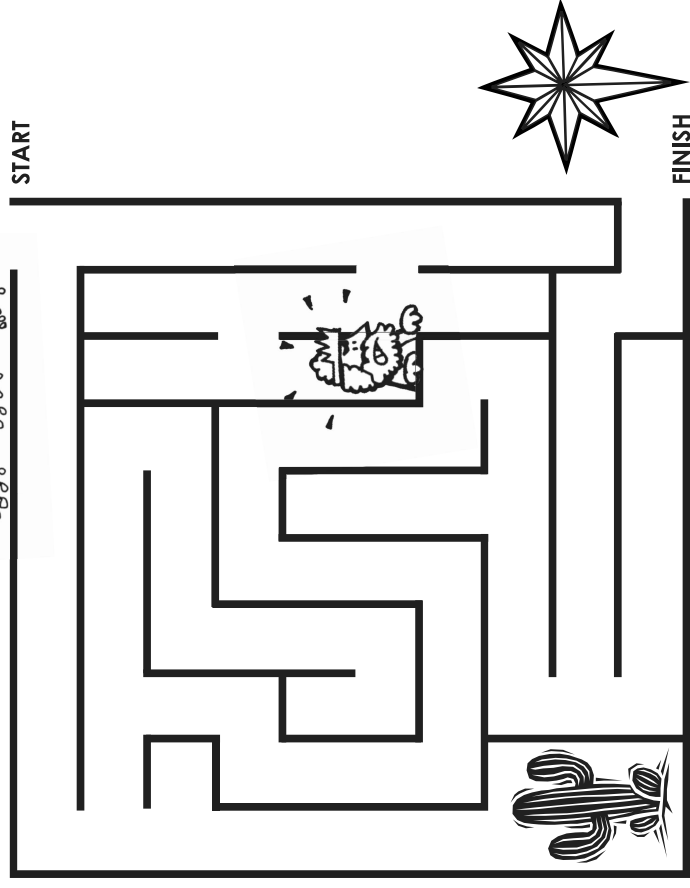


# PRE-READER

Epiphany 4

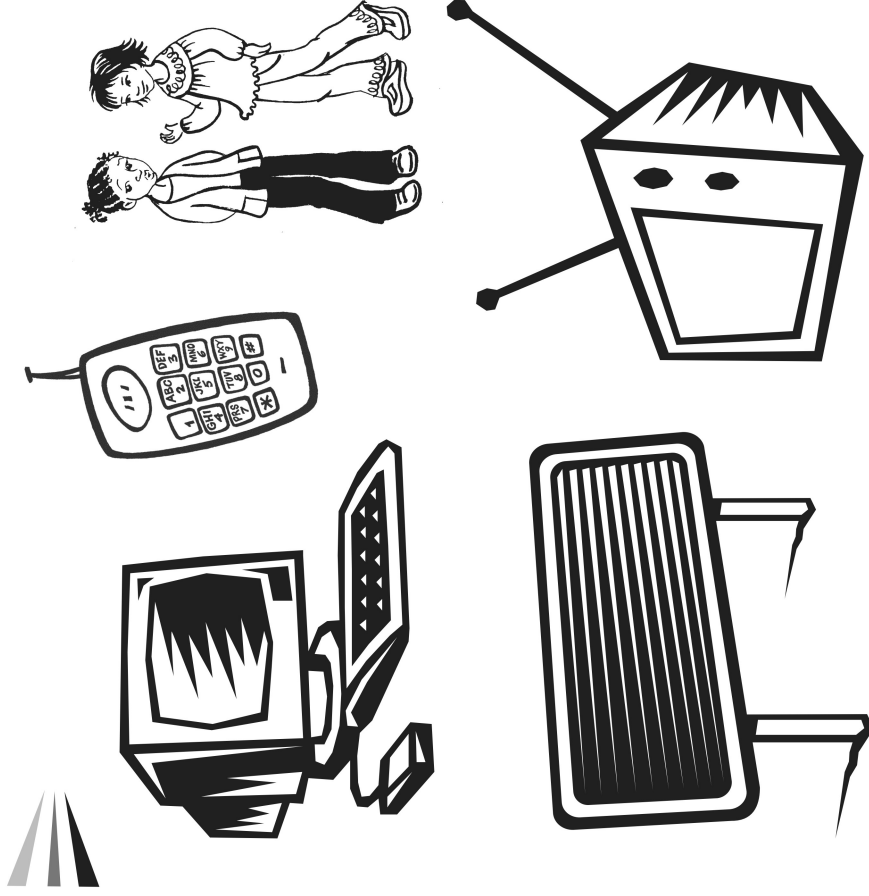
- Today is the **4<sup>th</sup> Sunday** after Epiphany.
- During Epiphany, we remember that Jesus is the **light of the world.**
- The symbol of Epiphany is a **burst of light.**

**The symbol of Epiphany is a star. It reminds us of the star that the Magi followed to find Jesus. Go through the maze to help them reach the star, but don't run into Herod or get lost in the desert!**

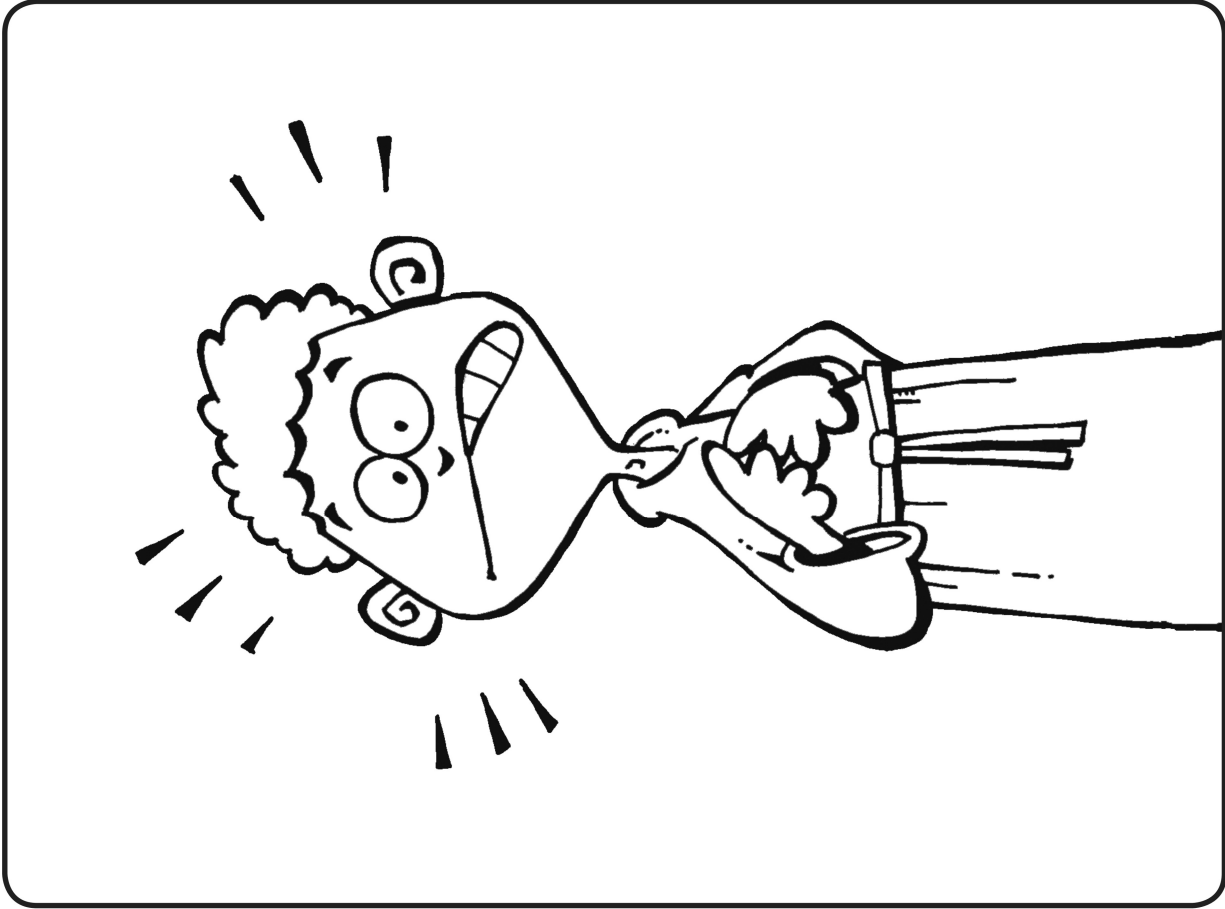


God tells Jeremiah to "speak" God's word to the nations. How would you spread God's word today?

**Circle the way that you would choose, or draw your own idea.**



MY IDEA



**Jeremiah was nervous. "But, God, I'm just a kid! I don't know what to say to grown-ups!"**